

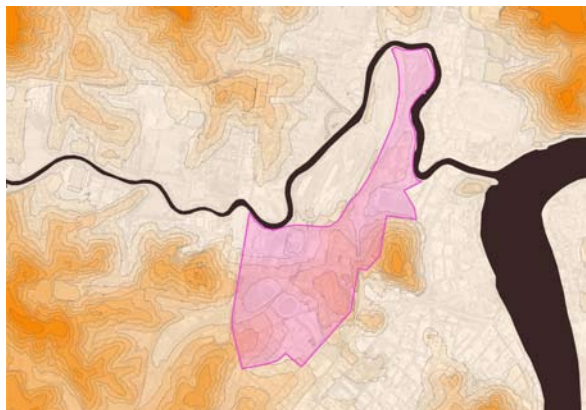
BOWEN HILLS URBAN DEVELOPMENT AREA



The fragmented network of shared pedestrian and cycle paths could be alleviated by a series of new shared paths and bridges.



Proposed small green spaces can be replaced by a lineal green heart.



The proposed landscape rationale for Bowen Hills is in response to the Urban Land Development Authority's Structure Plan. Cohesive urban design and landscape character are necessary components of successful transit-oriented development. The rationale for a future landscape typology is based on topography and vegetation that once existed in the site, namely productive littoral rainforest on the alluvial floodplain, and dryer, iconic vegetation on the hillsides.