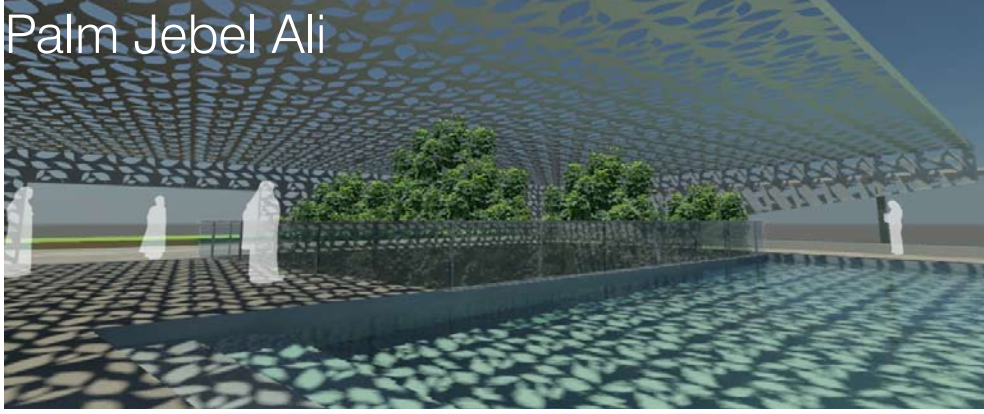


Palm Jebel Ali



Floating falling leaves have been used as the inspiration for the landscape design. Notionally, the time taken to watch a leaf falling is a response to the recreation needs of the residents.

In this Dubai residential tower development, the translation of the floating leaf occurs in several ways.

The tiles and pavement include graduating patterns mimicking the motion of a falling leaf.

Tiles and pavement colours are light browns, straw yellows and faded greys which depict the colours of fallen leaves.

Shelter design includes leaf-shaped perforations in the steel, creating dappled light.

